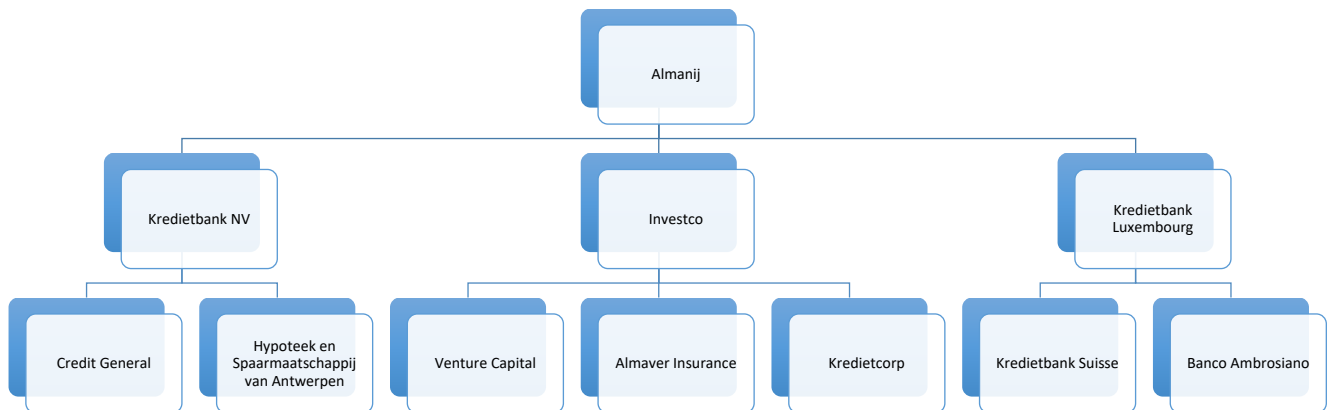


Kredietbank and Kredietbank Luxembourg – Ownership Structures

<u>Kredietbank and Kredietbank Luxembourg – Ownership Structures</u>	1
1. <u>1978 – 1998</u>	1
2. <u>2005 - 2012</u>	2

1. 1978 – 1998

Entire group of subsidiaries and companies controlled by the bank through ***Almanij***. The new structure, instituted in 1978, created three pools, one centered around the commercial business of the Kredietbank, another headed by Almanij to provide special financial services, and a third using the ***Kredietbank S.A. Luxembourg*** as the focal point for developing an international merchant and investment-banking operation.



2. 2005 - 2012

KBC merges with parent company Almanij to form KBC Group NV: The structure of the entity remains much the same. KBC Group NV have around 250 subsidiaries in total

